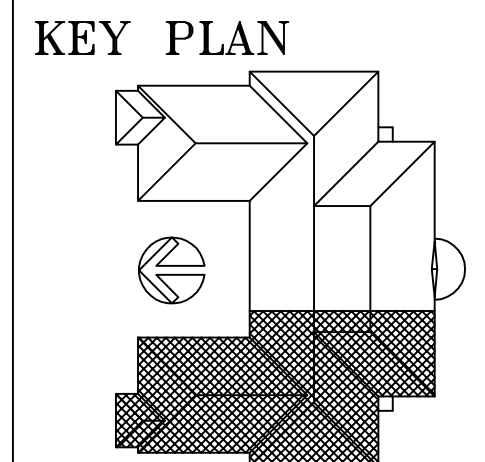
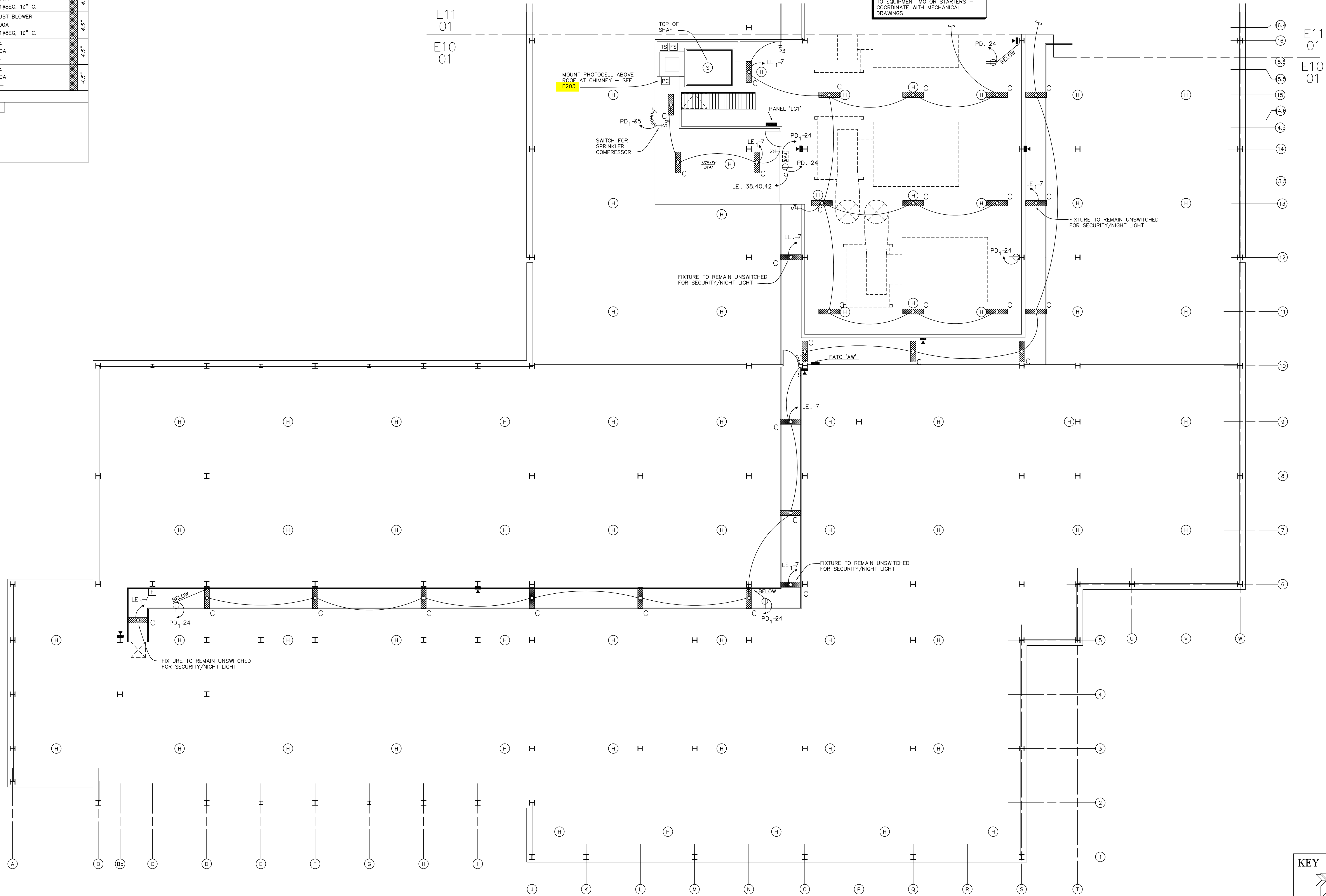
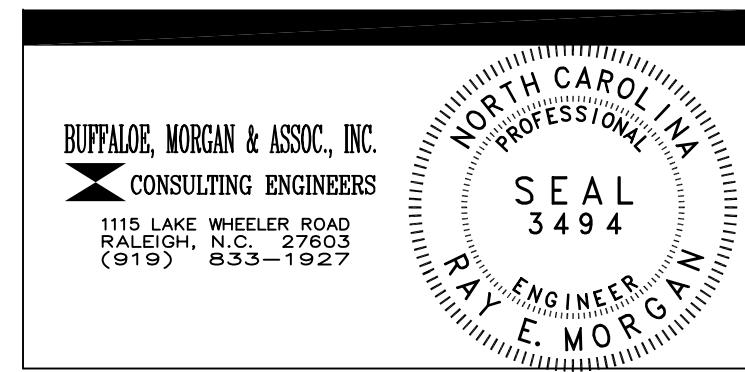


|   |   |                                    |     |   |      |
|---|---|------------------------------------|-----|---|------|
| 3 PHASE<br>4 WIRE<br>400 AMP BUSSING WITH<br>MAIN LUGS ONLY |   | PANEL<br>LG1<br>NEUTRAL/GROUND BAR |     | 277/480 VOLTS<br>SURFACE MOUNT<br>25 K - AIC MIN. INTEGRATED<br>INTERRUPTING CAPACITY |      |
| HT.   | DESIGNATION                                       | NO.                                | NO. | DESIGNATION   | HT.  |
| 4.5"  | PUMP<br>3P-20A<br>3#12, 1#12EG, 3/4" C.           | 1                                  | 2   | PUMP<br>3P-20A<br>3#12, 1#12EG, 3/4" C.   | 4.5" |
| 4.5"  | PUMP<br>3P-20A<br>3#12, 1#12EG, 3/4" C.           | 3                                  | 4   | PUMP<br>3P-20A<br>3#12, 1#12EG, 3/4" C.   | 4.5" |
| 4.5"  | EXHAUST BLOWER<br>3P-20A<br>3#12, 1#12EG, 3/4" C. | 5                                  | 6   | EXHAUST BLOWER<br>3P-100A<br>3#3, 1#8EG, 10" C.                                       | 4.5" |
| 4.5"  | EXHAUST BLOWER<br>3P-100A<br>3#3, 1#8EG, 10" C.   | 7                                  | 8   | EXHAUST BLOWER<br>3P-100A<br>3#3, 1#8EG, 10" C.                                       | 4.5" |
| 4.5"  | EXHAUST BLOWER<br>3P-100A<br>3#3, 1#8EG, 10" C.   | 9                                  | 10  | SPARE<br>3P-20A<br>---  | 4.5" |
| 4.5"  | SPACE   |                                    | 12  | SPARE<br>3P-20A<br>---  | 4.5" |
| REMARKS   |   |                                    |     |   |      |
| MLO   |   |                                    |     |   |      |



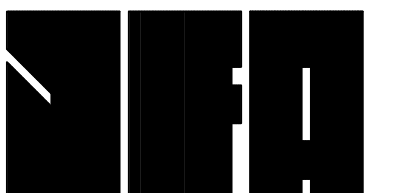
E10 01  
FLOOR PLAN  
SCALE: 1/8" = 1'-0"



|                    |       |          |
|--------------------|-------|----------|
| DRAWING REVISIONS: |       |          |
| NO.                | DATE: | REMARKS: |
|                    |       |          |
|                    |       |          |
|                    |       |          |
|                    |       |          |

DATE: 16 MAY 1994  
PROJECT#: 9305  
DESIGNED BY: SAB  
DRAWN BY: SMC  
CHECKED BY: SAB  
CHECKED BY: REM

SHEET NO.:  
E10  
OF 17



JEFFERIES AND FARIS  
ASSOCIATES  
ARCHITECTS + PLANNERS  
SEA TOWERS, SUITE 201  
2002 EASTWOOD ROAD  
WILMINGTON, N.C. 28403  
TEL: 910.256.6633  
FAX: 910.256.9088

SCIENCE BUILDING  
UNIVERSITY OF NORTH CAROLINA AT WILMINGTON  
CODE 49388 ITEM 301 ID#6089280301A

SHEET TITLE:  
ATTIC FLOOR PLAN - WEST  
LIGHTING AND POWER

